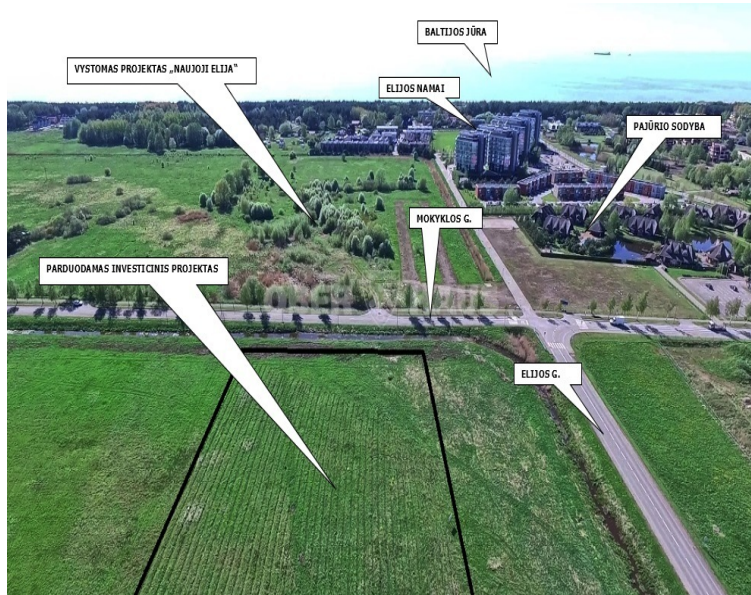






Land for sale

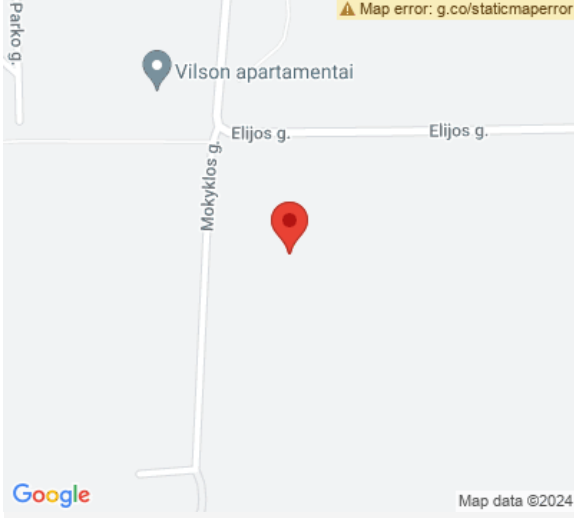
Palangos m. sav., Šventoji, Mokyklos g.




 Object Type	Land for sale
 Purpose	Residential land
 Land area	257.25 a
 Price	1 286 000 EUR


INVESTMENT PLOT WITH DETAILED PLAN FOR SALE
 INVESTMENT PROJECT - SEASIDE LAGŪNA HOUSE !!!
 A 2.5725 ha plot of land with a detailed plan is for sale in Palanga, Šventoji. According to the decisions of the detailed plan, it is planned to build two-room and one-room houses. Land use - Other. Permissible building height up to 8.5 meters. Building density 0.28, building intensity 0.60, building type - free planning. Number of floors - two with an attic. Asphalt accesses, there are footpaths, street lighting. All city communications. An attractive place for both relaxation and living. 700 m to the beach. Access is very convenient. *** PALANGA COUNCIL HAS DECIDED TO CONNECT PALANGA TO ŠVENTA VYTAUTO STREET ***
 ELIJA APARTMENT PROJECT IS DEVELOPED NEARBY ***
 It is possible to develop two-apartment houses in stages (possible total number of houses 60-70 + units) 4 acres of land owned. At the ...


Read more: <https://www.ober-haus.lt/en/OH457898>




Rimantas Martišauskas
 Real estate expert

 +370 602 23 723

 +370 46 40 20 16

 rimantas.martisauskas@oh.lt

 S. Daukanto g. 3, 92123 Klaipėda