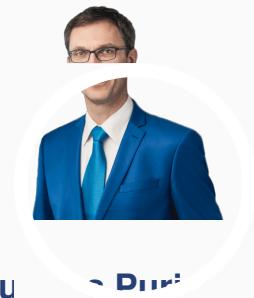
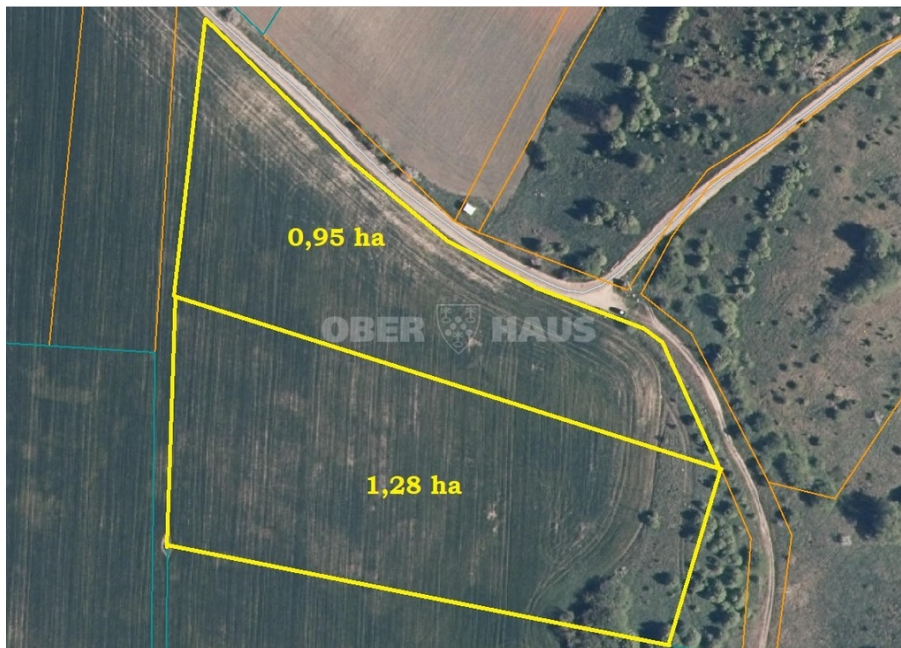


# Klaipėdos r. sav., Šlikių k.

LAND FOR SALE

36 000 €



**Audrius Purickas**  
Real estate expert

- +370 684 75 518
- audrius.purickas@oh.lt
- S. Daukanto g. 3, 92123 Klaipėda

## About this object

Two agricultural plots of 0.95 ha and 1.28 ha next to each other in Šlikių village, Klaipėda district, near Kretinga. You will reach the plots on a gravel road, 250 m from the paved road Klaipėda - Kretinga. Suitable for residential construction. Continues from west to east. A power line runs through the eastern end of the large lot. The length of the sides of the large plot in meters: 195 x 60 x 175 x 83. The small one is irregular in shape, the length of the straight side is 195 m. The surface of the plots is flat, sloping to the east. 100 m from the eastern border of the plots there is a water body, 200 m from the Danė river. The entertainment "Vinetai village" is nearby. You can buy one plot. Price, EUR: - 0.95 ha - 40000; - 1.28 ha - 36000; - both together - 75000. DISTANCE TO: - Kretinga: 2 km; - Kretingale: 2 km; - Klaipėda (University Hospital): 12 km; - Klaipėda (PC Akropolis): 23 km; - Palanga via Kretinga: 16 km.

Read more: [www.ober-haus.lt/en/OH391286](http://www.ober-haus.lt/en/OH391286)

Object Type	Land for sale
Purpose	Agricultural
Land area	128.00 a
Nuoroda	ober-haus.lt/en/OH391286

